

Caution: Please read instructions thoroughly before unpacking assembly parts. Sharp, exposed staple tips can cause injury, therefore, for your protection, please remove any exposed staples used in packing.

1. We recommend that you should assemble this product with the assistance of another person; this will make assembly easier, and will help to eliminate damage to the product or injury to persons during assembly.

2. Be sure to check all packing materials carefully for small parts that may have come loose inside the carton during shipment.

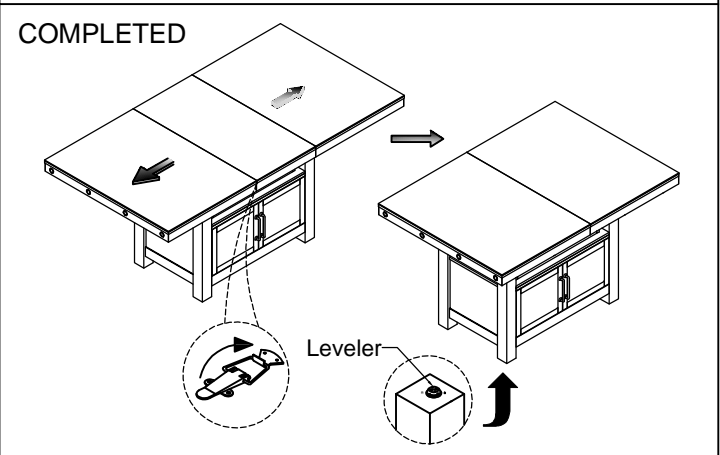
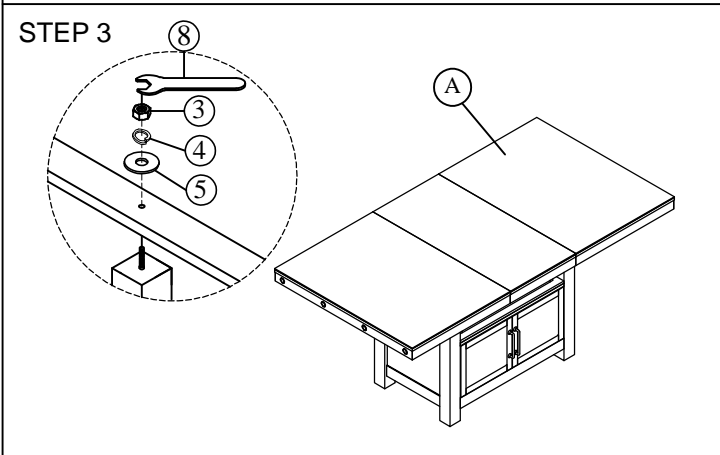
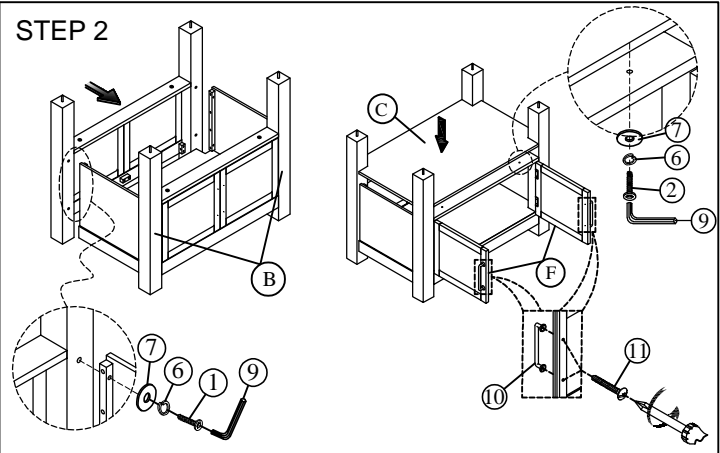
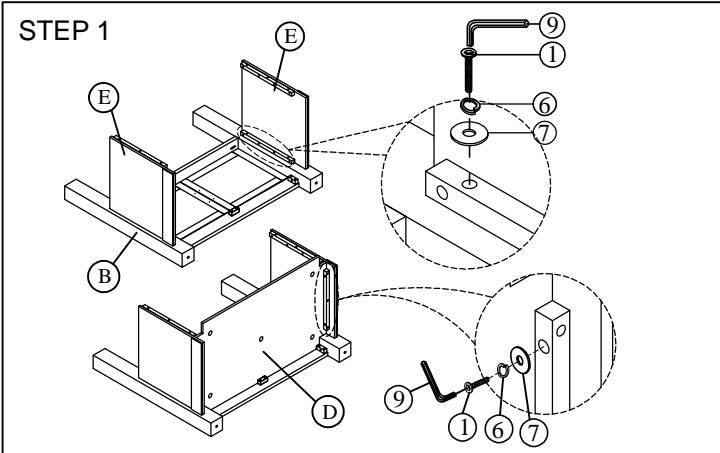
3. Please do not over tighten screws or bolts.

4. Please put all parts on a non-abrasive floor before assembly, and foolow the assembly steps to assemble your newly purchased product correctly and efficiently.

PART LIST			
NO.	PART DESC	CODE.	Q'TY
A	Dining Table Top Counter Table Top		1
B	Dining Table Base Complete Leg Frame Counter Table Base Complete Leg Frame	PDMN100DBBDELEG PDMN300DBBDELEG PDMN100CBLEG PDMN300CBLEG	2
C	Dining Table Base Top Shelf Counter Table Base Top Shelf	PDMN100DBBDTOP PDMN300DBBDTOP PDMN100CBTOP PDMN300CBTOP	1
D	Dining Table Base Bottom Shelf Counter Table Base Bottom Shelf	PDMN100DBBDBOT PDMN300DBBDBOT PDMN100CBBOT PDMN300CBBOT	1
E	Dining Table Base with side connecting panel Counter Table Base with side connecting panel	PDMN100DBBDSCP PDMN300DBBDSCP PDMN100CBSCP PDMN300CBSCP	2
F	Dining Table Base Left & Right Door Counter Table Base Left & Right Door	PDMN100DBBDDOR PDMN300DBBDDOR PDMN100CBBOR PDMN300CBBOR	2

HARDWARE LIST			
NO.	HARDWARE DESC	CODE.	Q'TY
1	Allen bolt (Ø1/4"*1-1/2")	PDMN100CTMNHW PDMN300CTMNHW PDMN100CTMNDTHW PDMN300CTMNDTHW	12
2	Allen bolt (Ø1/4"*1")		4
3	Hex nut (Ø5/16")		4
4	Spring washer (Ø5/16")		4
5	Flat washer (Ø5/16"*3/4")		4
6	Spring washer (Ø1/4")		16
7	Flat washer (Ø1/4"*3/4")		16
8	Spanner (Ø5/16")		1
9	Allen key (Ø1/8")		1
10	Handle		4
11	Bolt (Ø5/32"*1")		8

⚠ Only tighten all bolts when all bolts aligned with bolt inserts.



⚠ WARNING: To avoid serious personal injury:

- Carefully and strictly follow assembly instructions. Improper assembly of furniture can result in structural failure, instability of the product, or tip-over.
- Monitor and carefully control the assembly components. These include small parts and hardware that may present a choking hazard to small children. Furniture should be assembled only by responsible adults and children should not be involved in the assembly process.
- Where provided, wall mounting hardware should always be used as prescribed in these instructions to anchor furniture to walls. Proper use of the wall mounting hardware can significantly reduce the potential for furniture tip-over and crushing injuries.



WARNING: To avoid serious personal injury:

- Carefully and strictly follow assembly instructions. Improper assembly of furniture can result in structural failure, instability of the product, or tip-over.
- Monitor and carefully control the assembly components. These include small parts and hardware that may present a choking hazard to small children. Bob's furniture should be assembled only by responsible adults and children should not be involved in the assembly process.
- Where provided, wall mounting hardware should always be used as prescribed in these instructions to anchor furniture to wall. Proper use of the wall mounting hardware can significantly reduce the potential for furniture tip-over and crushing injuries.