




Assembly Instructions

BOB'S DISCOUNT FURNITURE

FUSION - DRESSER

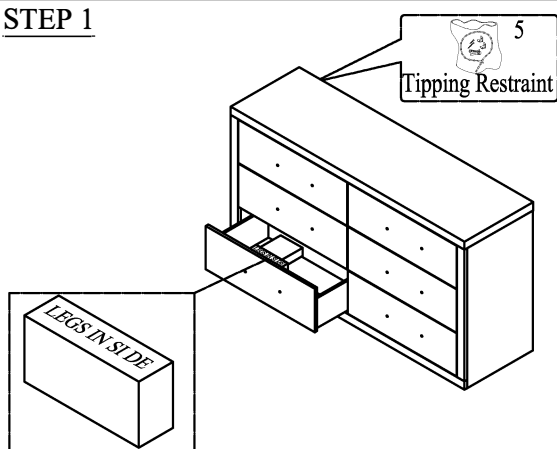
Caution: Please fully read instructions before unpacking assembly parts.

1. We recommend that you assemble this product with the assistance of another person to avoid injury and prevent damage to the product.
2. Be sure to check all packing materials carefully for small parts or hardware that may have come loose inside the carton during shipment.
3. Please put all parts on a non-abrasive surface before assembling. Follow the steps to assemble your newly purchased product correctly.

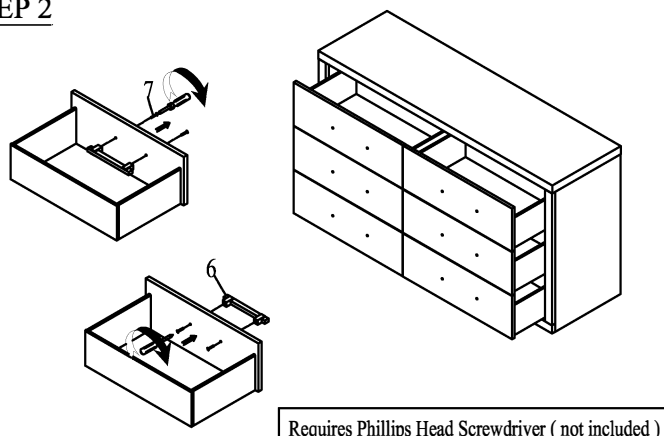
Code	Parts	Qty
A	Dresser 	1pc
B	Leg 	4pcs
C	Center Support Leg 	1pc

Code	Hardware	Qty
1	Φ1/4"x2-1/4"L Allen Head Bolt 	4pcs
2	Ø1/4" Spring Washer 	4pcs
3	Ø1/4" Flat Washer 	4pcs
4	Ø1/4" Allen Wrench 	1pc
5	Tipping Restraint Kit 	1set
6	Handle (Pre-installed) 	6pcs
7	Screw For Handle M4*22mm (Pre-installed) 	12pcs

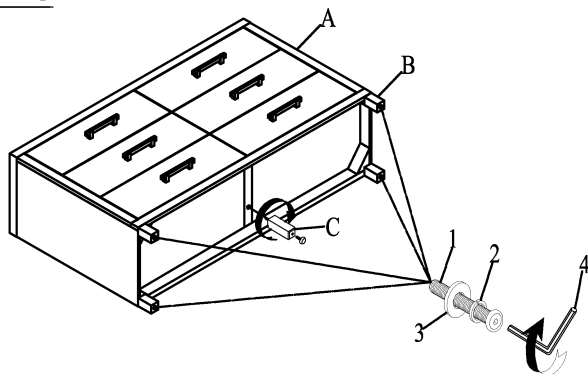
STEP 1



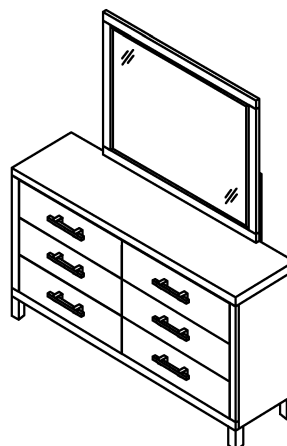
STEP 2



STEP 3



COMPLETE



Hardware Pack Location(s):

FUSION - DRESSER

1 of 1

MADE IN VIETNAM



WARNING: To avoid serious personal injury:

- Carefully and strictly follow assembly instructions. Improper assembly of furniture can result in structural failure, instability of the product, or tip-over.
- Monitor and carefully control the assembly components. These include small parts and hardware that may present a choking hazard to small children. Bob's furniture should be assembled only by responsible adults and children should not be involved in the assembly process.
- Where provided, wall mounting hardware should always be used as prescribed in these instructions to anchor furniture to wall. Proper use of the wall mounting hardware can significantly reduce the potential for furniture tip-over and crushing injuries.