



WARNING: To avoid serious personal injury:

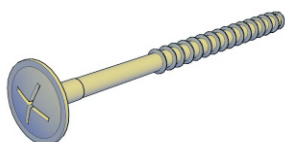
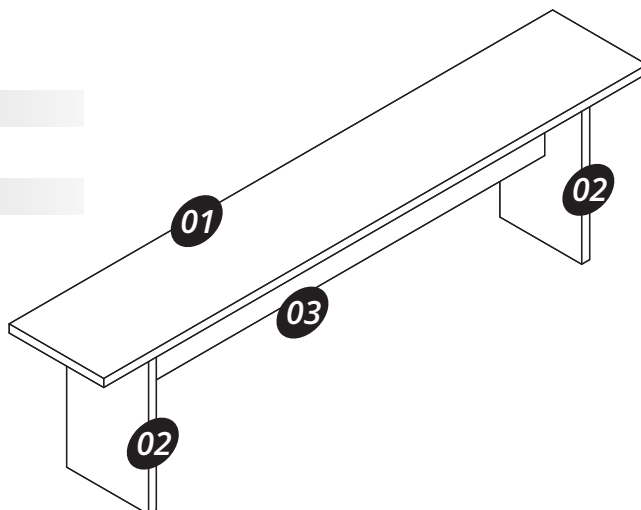
- Carefully and strictly follow assembly instructions. Improper assembly of furniture can result in structural failure, instability of the product, or tip-over.
- Monitor and carefully control the assembly components. These include small parts and hardware that may present a choking hazard to small children. Bob's furniture should be assembled only by responsible adults and children should not be involved in the assembly process.
- Where provided, wall mounting hardware should always be used as prescribed in these instructions to anchor furniture to walls. Proper use of the wall mounting hardware can significantly reduce the potential for furniture tip-over and crushing injuries.

Included in the package

01 - Seat Panel = 01 piece

02 - Legs = 02 pieces

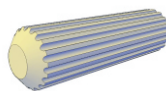
03 - Crossbar = 01 piece



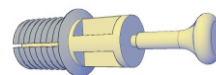
A = 04x



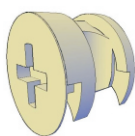
B = 04x



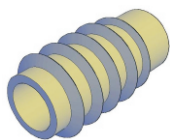
C = 10x



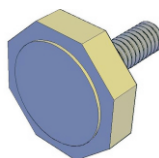
D = 07x



E = 07x



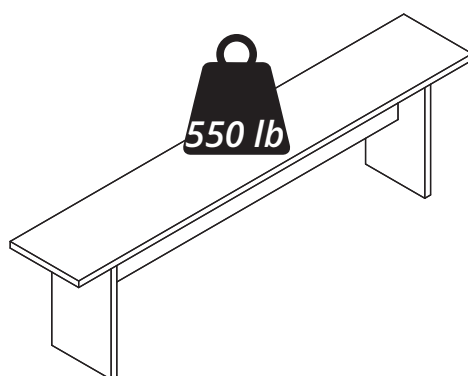
F = 04x



G = 04x



H = 11x



Tools needed
(not included)

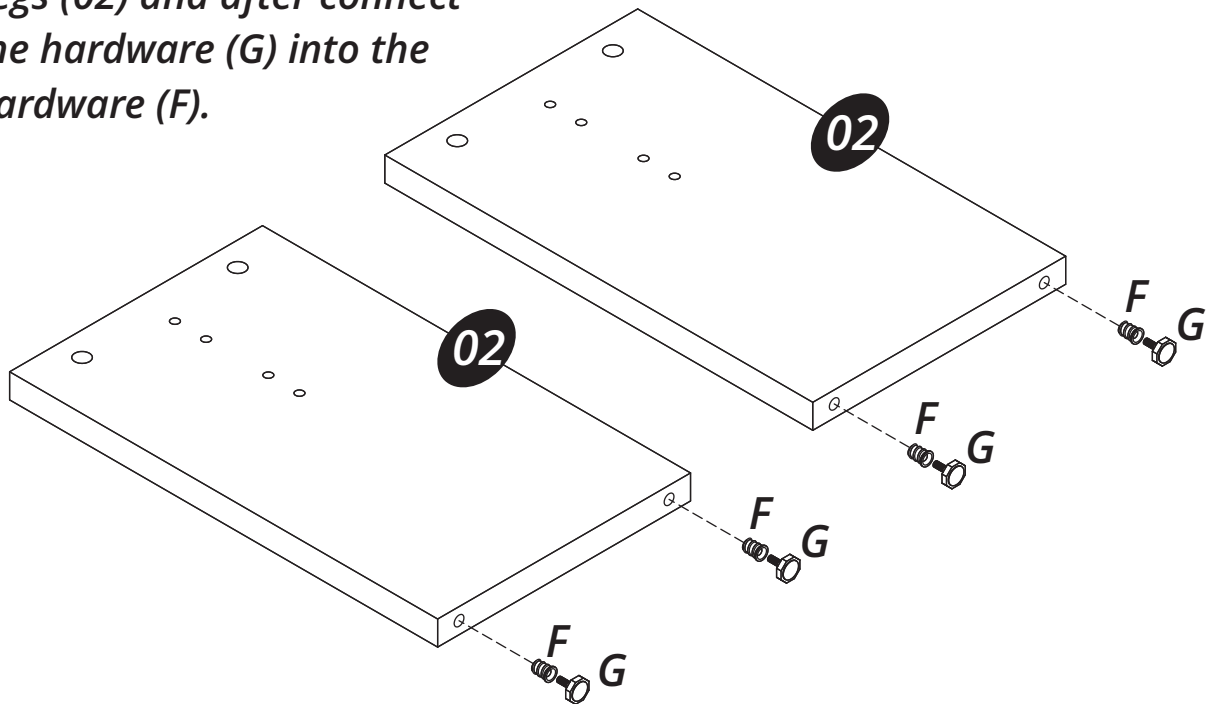


Phillips screw driver

Screw driver

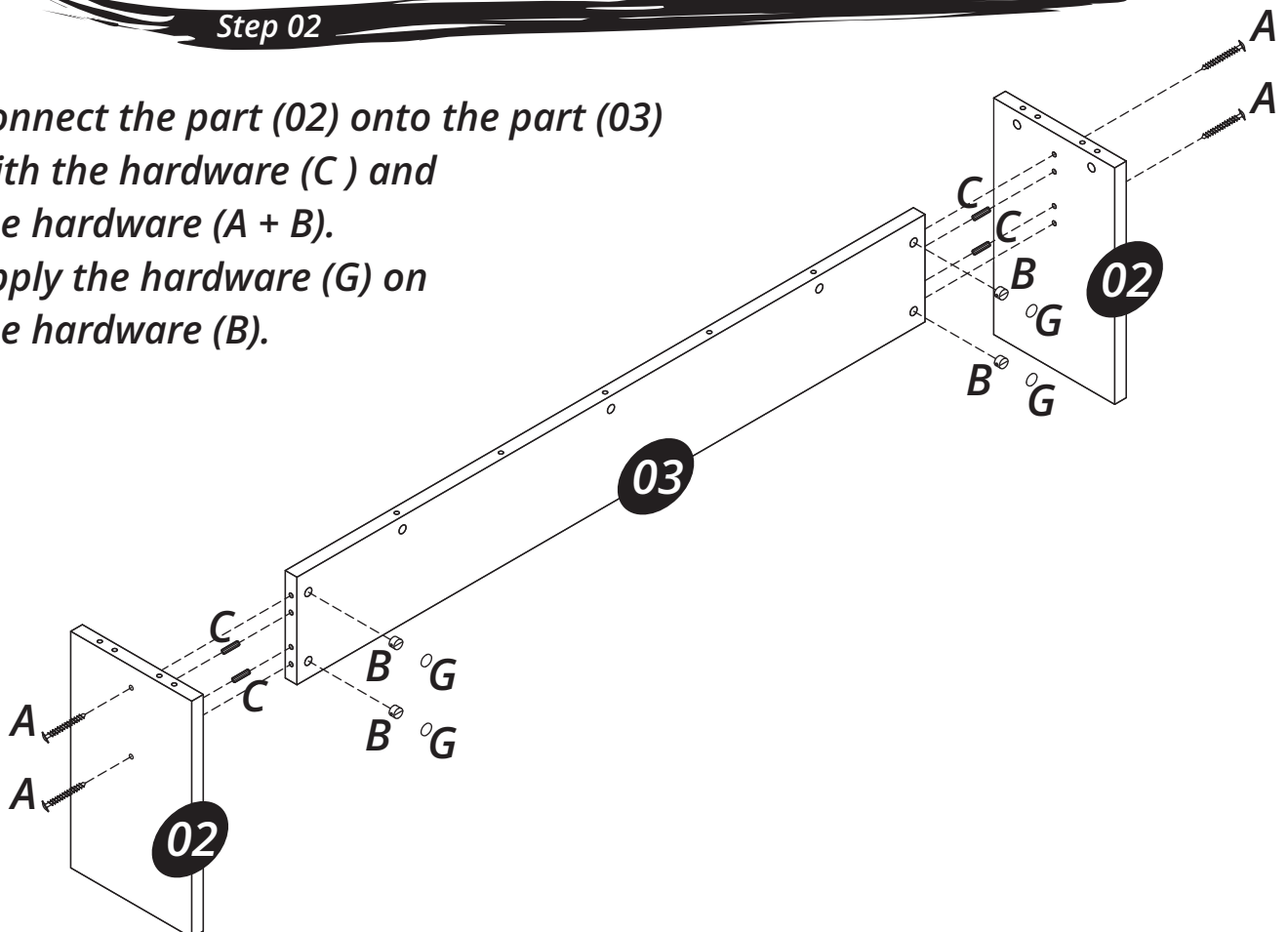
Step 01

Fix the hardware (F) into the Legs (02) and after connect the hardware (G) into the hardware (F).



Step 02

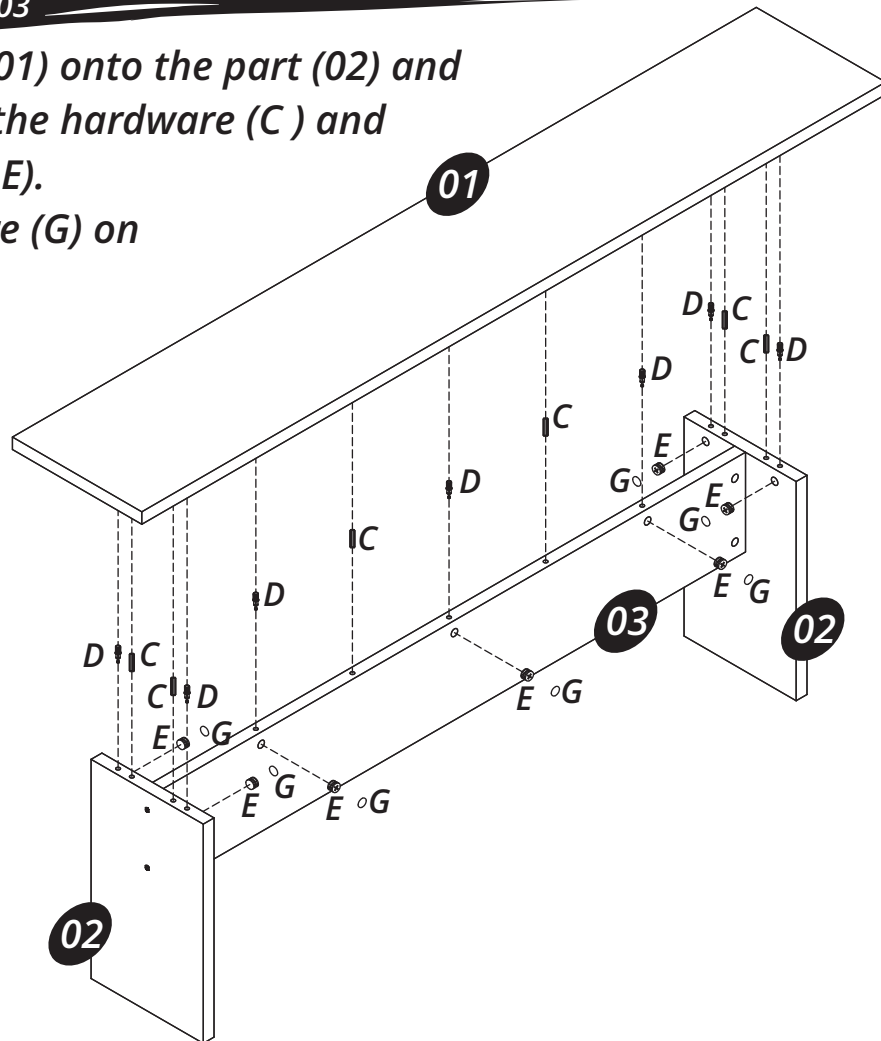
*Connect the part (02) onto the part (03) with the hardware (C) and the hardware (A + B).
Apply the hardware (G) on the hardware (B).*



Step 03

Connect the part (01) onto the part (02) and the part (03) with the hardware (C) and the hardware (D + E).

Apply the hardware (G) on the hardware (E).



Step 04

Adjust the height of the Bench using the hardware (F).

