

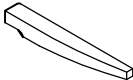



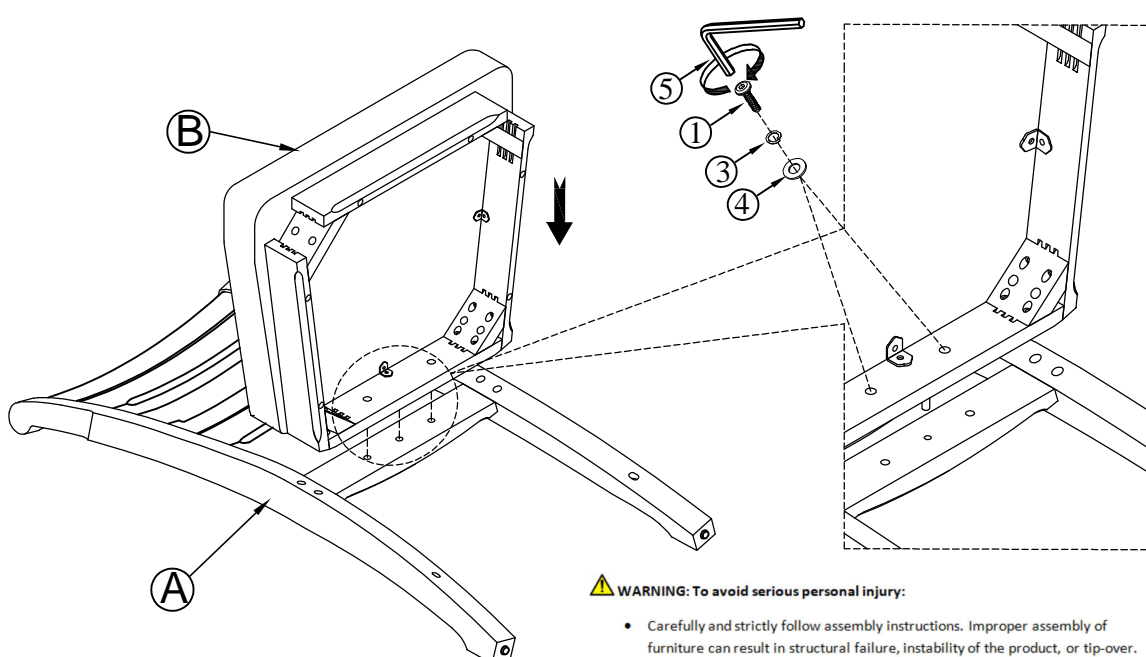
ASSEMBLY INSTRUCTIONS

NOTE: THIS ITEM NOT RECOMMENDED FOR COMMERCIAL USE
KEEP THIS DOCUMENT FOR REFERENCE IN CASE PARTS ARE NEEDED
DO NOT TIGHTEN SCREWS UNTIL COMPLETELY ASSEMBLED!!

No	PARTS LIST		Q'TY
A		CHAIR BACK	1PC
B		SEAT FRAME W/CUSHION	1PC
C		LEGS (L & R)	2PCS
D		STRETCHERS (L & R)	2PCS

NO.	HARDWARE LIST			Q'TY
1		ALLEN BOLT	Ø1/4" x 1-1/2"	2PCS
2		ALLEN BOLT	Ø5/16" x 2-3/4"	8PCS
3		LOCK WASHER	Ø5/16"	10PCS
4		FLAT WASHER	Ø5/16" x 19Dmm	10PCS
5		ALLEN KEY	4mm	1PC
6		SCREWS	5/32" x 2"	4PCS

STEP 1



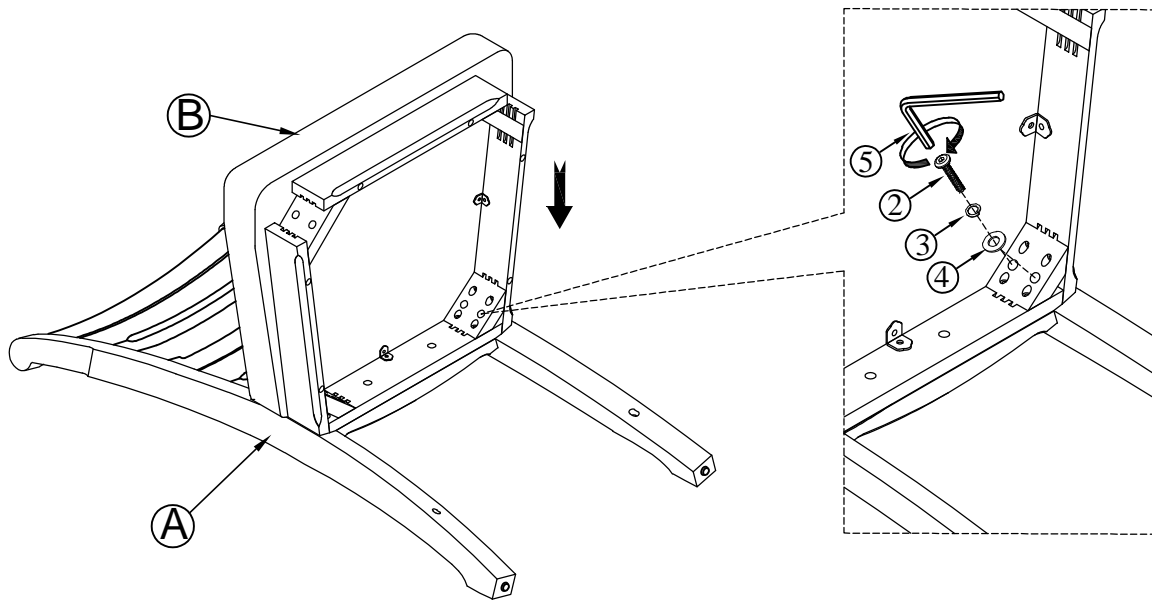
WARNING: To avoid serious personal injury:

- Carefully and strictly follow assembly instructions. Improper assembly of furniture can result in structural failure, instability of the product, or tip-over.
- Monitor and carefully control the assembly components. These include small parts and hardware that may present a choking hazard to small children. Bob's furniture should be assembled only by responsible adults and children should not be involved in the assembly process.
- Where provided, wall mounting hardware should always be used as prescribed in these instructions to anchor furniture to wall. Proper use of the wall mounting hardware can significantly reduce the potential for furniture tip-over and crushing injuries.

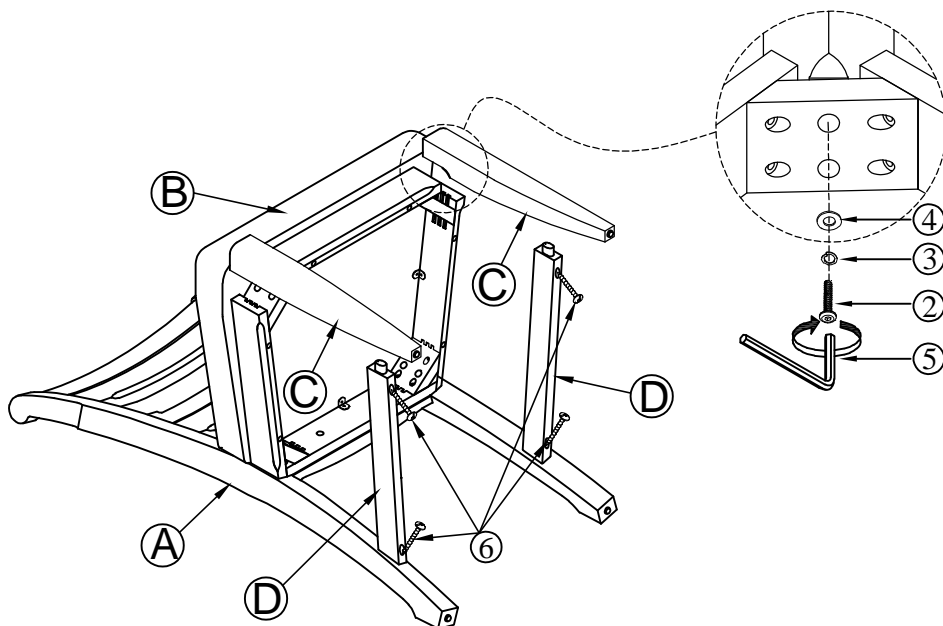
ASSEMBLY INSTRUCTIONS

NOTE: THIS ITEM NOT RECOMMENDED FOR COMMERCIAL USE
KEEP THIS DOCUMENT FOR REFERENCE IN CASE PARTS ARE NEEDED
DO NOT TIGHTEN SCREWS UNTIL COMPLETELY ASSEMBLED!!

STEP 2



STEP 3



ASSEMBLY INSTRUCTIONS

NOTE: THIS ITEM NOT RECOMMENDED FOR COMMERCIAL USE
KEEP THIS DOCUMENT FOR REFERENCE IN CASE PARTS ARE NEEDED
DO NOT TIGHTEN SCREWS UNTIL COMPLETELY ASSEMBLED!!

COMPLETED

