










Assembly Instructions

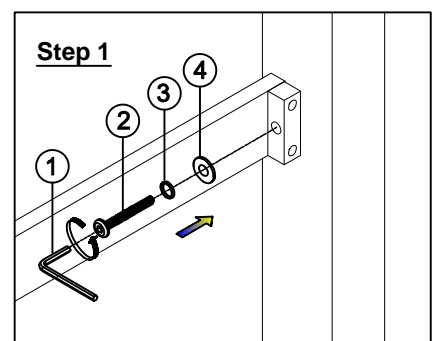
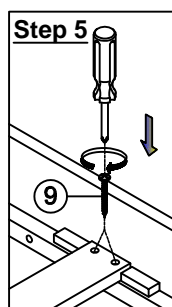
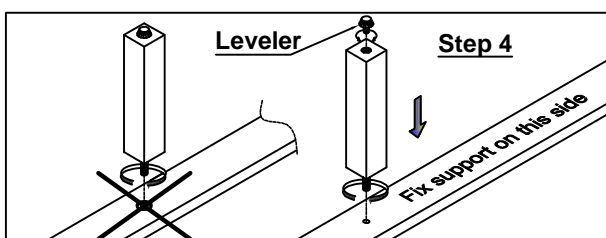
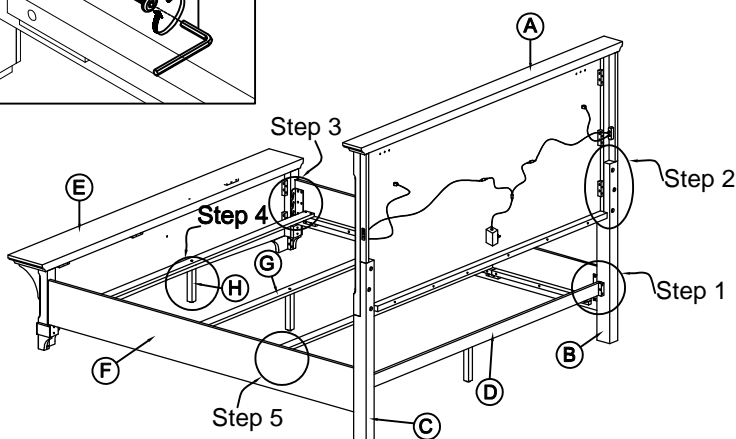
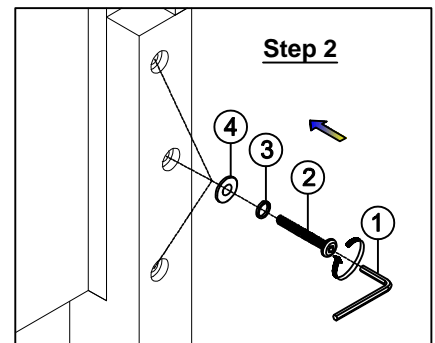
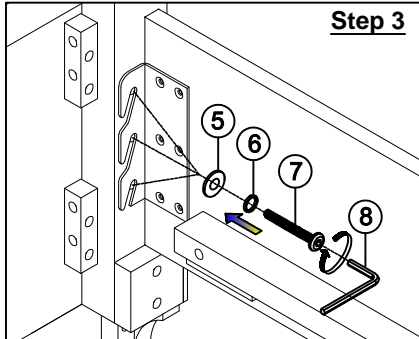
QUEEN BED

Caution: Please read instructions thoroughly before unpacking assembly parts. Sharp, exposed staple tips can cause injury, therefore, for your protection, please remove any exposed staples used in packing.

1. We recommend that you should assemble this product with the assistance of another person; this will make assembly easier, and will help to eliminate damage to the product or injury to persons during assembly.
2. Be sure to check all packing materials carefully for small parts that may have come loose inside the carton during shipment.
3. Please do not over tighten screws or bolts.
4. Please put all parts on a non-abrasive floor before assembly, and follow the assembly steps to assemble your newly purchased product correctly and efficiently.

PART LIST			
No.	PART DESC	CODE.	Q'TY
A	QUEEN HEADBOARD		1
B	HEADBOARD LEFT LEG	PBS600HBLEG	1
C	HEADBOARD RIGHT LEG		1
D	HEADBOARD STRETCHER	PBS600QHSTR	1
E	QUEEN FOOTBOARD		1
F	SIDE RAIL		2
G	ROLL SLAT	PBS600QBSLT	4
H	SLAT SUPPORT LEG W/LEVELER	PBS600BDSPL	4
I	LAMP		1 Set

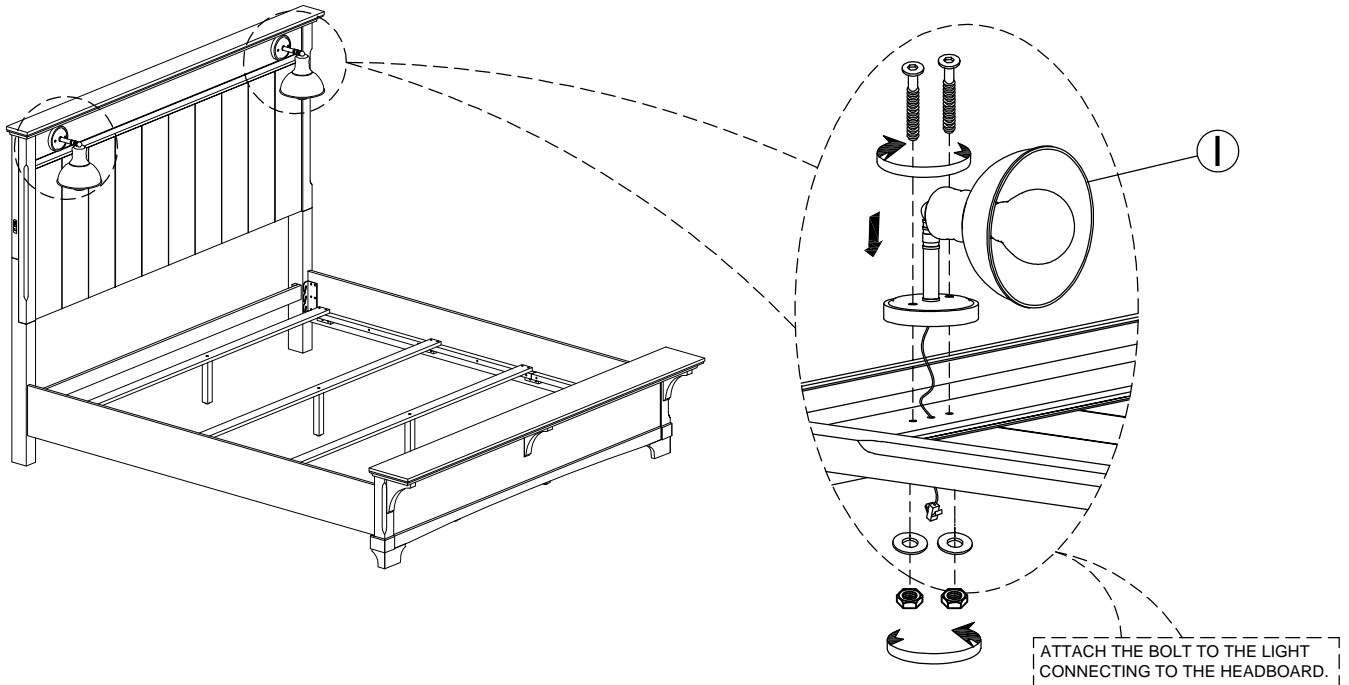
No.	HARDWARE LIST (PACK WITH HEADBOARD)		CODE.	Q'TY
1		Flat Washer 5/16"	PBS600QBHW	8
2		Spring Washer 5/16"		8
3		Bolt (5/16" x 50mm)		8
4		Allen Key M4		1
HARDWARE LOCATED IN RAILS BOX				
5		Flat Washer 5/16"	PBS600QBHW	12
6		Spring Washer 5/16"		12
7		Bolt (5/16" x 25mm)		12
8		Allen Key M4		1
HARDWARE LIST QUEEN FOOTBOARD				
9		Screw M4 x 25mm	PBS600QBHW	16



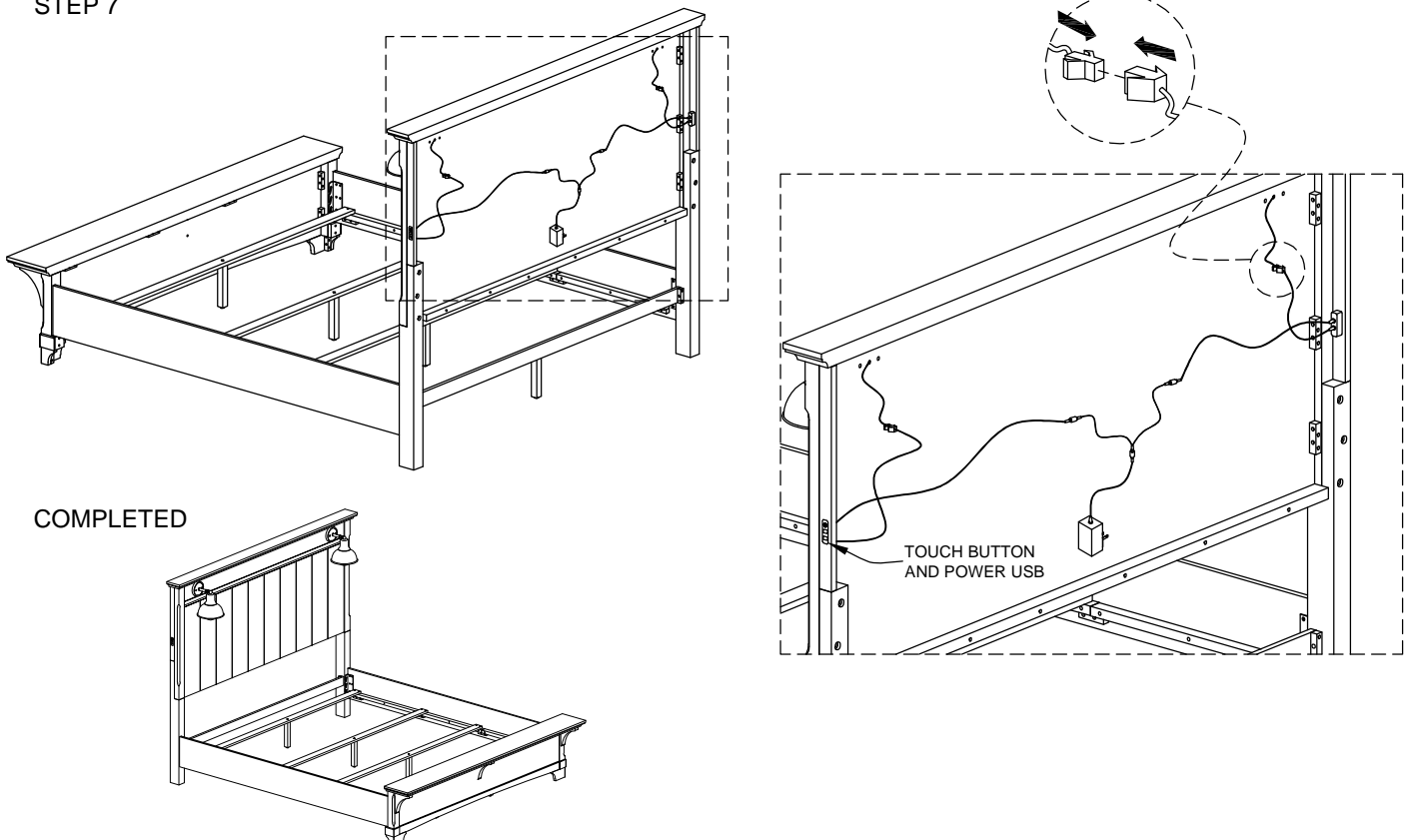
Assembly Instructions QUEEN BED

BOB'S DISCOUNT FURNITURE
MYBOBS.COM

STEP 6



STEP 7



COMPLETED



WARNING: To avoid serious personal injury:

- Carefully and strictly follow assembly instructions. Improper assembly of furniture can result in structural failure, instability of the product, or tip-over.
- Monitor and carefully control the assembly components. These include small parts and hardware that may present a choking hazard to small children. Bob's furniture should be assembled only by responsible adults and children should not be involved in the assembly process.
- Where provided, wall mounting hardware should always be used as prescribed in these instructions to anchor furniture to wall. Proper use of the wall mounting hardware can significantly reduce the potential for furniture tip-over and crushing injuries.